

The background of the entire page is a dark blue topographic map with white contour lines. The lines are irregular and wavy, creating a sense of depth and terrain. The text is centered on this background.

# TUgis

Maryland's Geospatial Conference

August 6–8, 2018 | Towson, MD

[TUgisConference.com](http://TUgisConference.com)



@MDiMAP  
imap.maryland.gov  
data.imap.maryland.gov

MD iMAP is Maryland's Enterprise Geographic Information System (GIS).

The platform include:

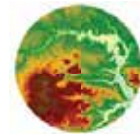
- a robust and reliable core infrastructure
- access to GIS software
- delivery of authoritative data and services
- training opportunities
- contract vehicles for State and local governments

MD iMAP provides framework layers...



**Imagery**

Access imagery so clear you can see the pitcher's mound at Oriole Park at Camden Yards



**LiDAR**

Elevation data and derivative products for Maryland



**Property Data**

Identify each property point in the State and the tax information that goes with it



**Centerlines**

Set a course for Maryland and explore its 30,000 miles of interstates, highways, and secondary roads

...and hundreds of services supporting analysis, applications, and location based activities impacting:

- Business & Tourism
- Education
- Emergency Services & Public Safety
- Energy & Environment
- Growth, Planning, & Revitalization
- Health & Human Services
- Transportation



# Program

## August 6-7, 2018

8:00 a.m.-5:00 p.m. TUGis 2018 Trainings

## August 8, 2018

7:30-8:30 a.m. Arrival and Breakfast

8:30-9:30 a.m. Opening Plenary

9:30-10:00 a.m. Exhibit Hall Coffee Break

10:00-11:00 a.m. Concurrent Session 1

11:00 a.m.-12:00 p.m. Concurrent Session 2

12:00-1:30 p.m. Lunch and Exhibitor Hall Networking

1:30-2:00 p.m. Exhibitor Showcase

2:00-3:00 p.m. Concurrent Session 3

3:00-3:30 p.m. Afternoon Break

3:30-4:30 p.m. Concurrent Session 4

4:30-6:30 p.m. TUGis Social

# Session Tracks

- Coding
- Complete Streets and Improving our Communities
- Development
- Government
- Industry Talks
- Innovation
- Lightning Sessions
- Our Communities
- Public Health
- Public Safety
- Technology
- Water and Transportation Infrastructure
- Workflow
- Working with Data

### Map App Competition 9:30am-5:30pm (Room 4303)

View and vote for your favorite map and app. Voting can be done using the sched app or with iPads in the room.

### Video Room 9:30am-6:00pm (Room 4204)

Stop by and share your GIS story with us! Where's GIS headed? Your favorite TUGis memory? Who or what influenced your career? And anything else you want to share.

### Kosher Room (Room 4209)

**ESRGC**  
EASTERN SHORE REGIONAL  
GIS COOPERATIVE

The ESRGC proudly supports  
TUGis: Maryland's Geospatial Conference

For more information on how the ESRGC may partner with you, please visit us at [www.esrgc.org](http://www.esrgc.org) or visit our TUGis booth today!



Hi, we're Fearless.  
We build software  
with a soul.

We're serious about creating software that makes the world a better place. It's our mission to build tools that empower communities and make a difference, so we take on projects that have a lasting impact.

[fearless.tech](http://fearless.tech)

# AECOM

## Built to deliver a better Maryland

### Industries we serve:

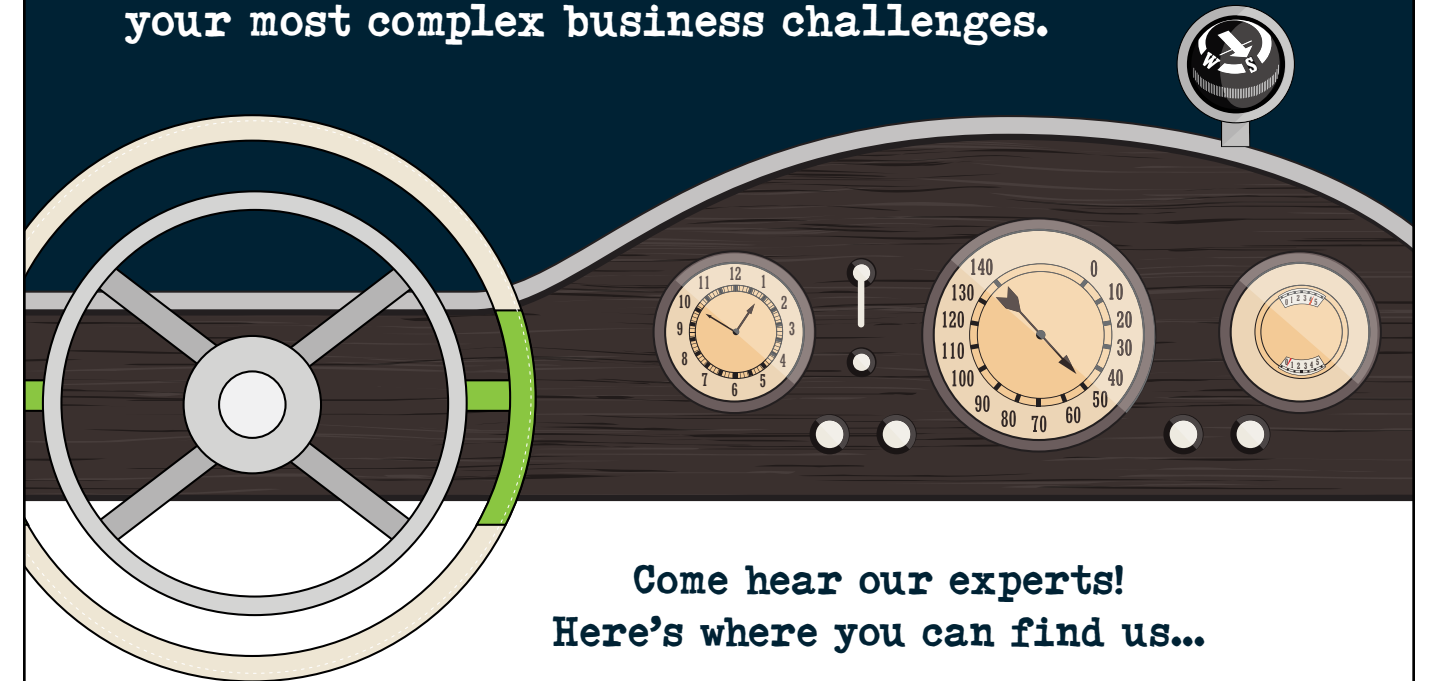
- Planning & Design
- Transportation
- Utilities
- Environment
- Water Resources
- Energy
- Defense

# BOOTH C4






[aecom.com](http://aecom.com)

# JMT TECHNOLOGY GROUP

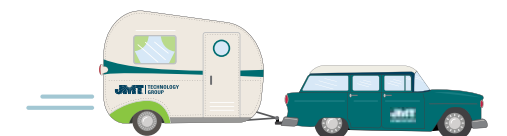
Tailored GIS and IT Services to help you navigate  
your most complex business challenges.



**Come hear our experts!  
Here's where you can find us...**

-  **Better Customer Collaboration Through Storytelling**  
Vince Novak → 1:30-2:00: Room 3114 [Exhibitor Showcase]
-  **Data Lifecycle for Interior Space Management at BWI Thurgood Marshall Airport**  
Will Garmer → 2:00-2:30: Room 4315 [Paper Presentation]
-  **Integration of MDOT MAA's Document Management System and GIS via the Projects Locator Application**  
Koren Melfi → 2:30-3:00: Room 4315 [Paper Presentation]
-  **MDOT MDTA's Expanded Use of GIS for Asset Management & NPDES Permit Compliance**  
Marian Batton and AJ de Rosset (MDTA) → 2:30 - 3:00: Room 2310 [Paper Presentation]
-  **What about Pro?**  
Jen Lishman → 3:30-4:30: Room 3310 [Lightning Talk]
-  **Streamlining MDOT SHA's Annual Truck Parking Surveys with ArcMap, ArcGIS Pro and Collector for ArcGIS**  
Chad Siwinski, Mallory Gill, and Sean Lain → 4:00-4:30: Room 2310 [Paper Presentation]

[www.jmttg.com](http://www.jmttg.com) | 443.662.4071 | @jmttg



# Training

## Monday–Tuesday, August 6–7

8:00AM	<p><b>Transitioning to ArcGIS Pro (Room 4118)</b></p> <p><b>Instructors:</b> Ashley Buzzeo, GISP, Alex Mikulski and Christina Nemphos, Towson University Center for GIS</p> <p>This two day course is intended to help individuals with basic knowledge of ArcGIS Desktop transition into using ArcGIS Pro. Individuals taking this course should already have some knowledge of GIS. This is a 2-day course.</p> <ul style="list-style-type: none"> <li>■ Navigate the modern ribbon-based interface</li> <li>■ Utilize projects to explore, symbolize, and map local data and feature service data</li> <li>■ Interact with datasets through queries and basic analysis</li> <li>■ Convert tabular data to spatial data and geocode tables</li> <li>■ Learn tips and tricks, create dynamic charts and animations, and generate 3-D views of data</li> </ul>
12:00PM	<b>Lunch (Room 4150)</b>
1:00PM	<p><b>Transitioning to ArcGIS Pro (Continued)</b></p>
5:00PM	<b>Training Day Happy Hour</b> August 7, 7PM, Greene Turtle

## Tuesday, August 7

8:00AM	<p><b>Keeping up with GIS Technology: A Hands-On Experience (Offering 1) (Room 2101)</b></p> <p><b>Instructor:</b> Art Lembo, Ph.D., Eastern Shore Regional GIS Cooperative (ESRGC)</p> <p>It seems like every time you turn around, there is some new technology or technique you need to learn. Some of these could be important for running your organization and some are important for your own professional development. Either way, most of us lack the practical experience of using many of these technologies and therefore feel ill-equipped to engage with others regarding their usefulness. You will be introduced to new software and will work exclusively with Maryland State data, so you'll see how each of these technologies relate to doing GIS in our state. At the end of this workshop you'll have an understanding of what these technologies are, how they can be used, and most importantly, you'll be able to say that you actually worked with the technologies yourself. In this four hour, hands-on workshop, you will be introduced to four technologies that many people are talking about, but few actually experience using, including, Open Source GIS, Spatial SQL, Python Scripting, and Big Data Analytics</p>	8:00AM	<p><b>Thinking Spatially (Room 3101)</b></p> <p><b>Instructor:</b> Ashley Buzzeo, GISP, Towson University Center for GIS</p> <p>This course is intended for those individuals with little or no knowledge of GIS, the MD iMAP Program, or ArcGIS Online. Attendees will learn fundamental concepts of Geographic Information Systems (GIS), including how to:</p> <ul style="list-style-type: none"> <li>■ Map tabular data and perform basic analysis with ArcGIS Online</li> <li>■ Convert tabular data to spatial data</li> <li>■ Use the MD iMAP Composite Geo-Locator</li> <li>■ Search for, create and share content</li> </ul>	8:00AM	<p><b>GISP Certification Application (Room 4101)</b></p> <p><b>Instructor:</b> Douglas Adams, GISP, Baltimore County</p> <p>This workshop will provide information on the process for becoming a geographic information system certified professional (GISP) focusing on the application requirements and exam content. Recent changes in GISP Certification process by the GIS Certification Institute (GISCI) will be discussed. GISCI has introduced the GISCI Geospatial Core Technical Knowledge Exam so any new applicants will be subject to this exam. The workshop will cover:</p> <ul style="list-style-type: none"> <li>■ GISCI Structure</li> <li>■ Certification history and statistics</li> <li>■ Portfolio requirements</li> <li>■ Online application process</li> <li>■ Exam content</li> </ul>
12:00PM	<b>Lunch (Room 4150)</b>				
1:00PM	<p><b>Keeping up with GIS Technology: A Hands-On Experience (Offering 2) (Room 2101)</b></p> <p><b>Instructor:</b> Art Lembo, Ph.D., Eastern Shore Regional GIS Cooperative (ESRGC)</p> <p>It seems like every time you turn around, there is some new technology or technique you need to learn. Some of these could be important for running your organization and some are important for your own professional development. Either way, most of us lack the practical experience of using many of these technologies and therefore feel ill-equipped to engage with others regarding their usefulness. You will be introduced to new software and will work exclusively with Maryland State data, so you'll see how each of these technologies relate to doing GIS in our state. At the end of this workshop you'll have an understanding of what these technologies are, how they can be used, and most importantly, you'll be able to say that you actually worked with the technologies yourself. In this four hour, hands-on workshop, you will be introduced to four technologies that many people are talking about, but few actually experience using, including, Open Source GIS, Spatial SQL, Python Scripting, and Big Data Analytics</p>	1:00PM	<p><b>Esri Story Maps (Room 3101)</b></p> <p><b>Instructors:</b> Anthony Puzzo and Matt Viverito, Esri</p> <p>Everyone has a story to tell. Or, more likely, you have many stories to tell! Esri Story Maps are a hugely popular way to put maps, images, videos and other media into an interactive web application that brings attention to a particular topic. Come to this introductory session to:</p> <ul style="list-style-type: none"> <li>■ Learn how organizations are using Story Maps</li> <li>■ Get hands-on experience with some of the most popular templates</li> <li>■ Hear some best practices for refining your Story Map.</li> </ul>	1:00PM	<p><b>Preparing for a Geospatial Career (Room 4105)</b></p> <p><b>Instructor:</b> Julie Spangler, GISP, JMT Technology Group</p> <p>This workshop is designed to help attendees prepare for a career as a GIS professional, whether entering the GIS profession or looking for a refresher when shifting careers. Whether you are about to graduate college, making a change in your career, or looking to apply for a new job, this workshop will benefit you. The workshop will include:</p> <ul style="list-style-type: none"> <li>■ A panel discussion covering perspectives from all sectors of the GIS industry</li> <li>■ Recommendations of how to prepare for submitting an application and interviewing for a job</li> <li>■ Suggested areas to ensure you are well rounded</li> <li>■ Questions and answers with industry and subject matter experts</li> <li>■ Hands-on breakout sessions</li> </ul>
5:00PM	<b>Training Day Happy Hour</b> August 7, 7PM, Greene Turtle, 408 York Rd, Towson, MD 21204 Close out training day with colleagues, friends, food, and fun at the Greene Turtle.				



At Esri®, we do more than talk about smart communities. We help create them.

For decades, we have partnered with thousands of governments of all sizes, all around the world. Through these partnerships we built ArcGIS® for State Government and ArcGIS for Local Government—a series of application templates to help you overcome real-world challenges related to the economy, health, infrastructure, and public safety. You can download these apps and start creating your smart community today. Smart communities start here.

Learn more at [esri.com/smartcommunities](http://esri.com/smartcommunities).



Copyright © 2017 Esri. All rights reserved.



# Public Safety Concurrent Conference: The Science of Where

Find out what's new and learn how GIS technology can answer the 'Where' question at TUgis, the region's largest conference dedicated to GIS technology.

Focused exclusively for public safety officials, this concurrent conference will allow you to explore what's new in mapping in 9-1-1, police, fire, and emergency management in Maryland through specialized sessions, created for public safety officials. Topics range from user presentations, table top exercises, NG 9-1-1, and how the private sector supports public safety.

**August 8, 2018**      **Room: 4110; Overflow: 4105**

10:00–11:00 a.m.	<p><b>Paper and Web Maps: A Crawl, Walk and Run Approach to Public Safety GIS</b></p> <p>Across the state, public safety officials are utilizing an emerging management approach—Crawl, Walk, Run—to help identify current GIS capabilities and conceptualize potential areas where GIS could improve operations. How are local and state agencies utilizing GIS technology in their daily operations? During this industry talk, multiple representatives who support GIS systems will discuss how they are building and enhancing GIS programs for the public good.</p> <p><b>Presenters:</b> Joanie Appell, Anne Arundel County Fire Department; Shelby Zelonis, Montgomery County Police Department; Anne-Sarra Blevins, Anne Arundel County Police Department; Will Melville, Maryland Emergency Management Agency; Tim Hutchison, Government of the District of Columbia</p>
11:00 a.m.–12:00 p.m.	<p><b>Private Sector Support of Public Safety (NAPSG /ESRI)</b></p> <p>Apps, maps, and tools developed to streamline the work for GIS personnel in public safety.</p> <p><b>Presenters:</b> Rebecca Harned, National Alliance for Public Safety GIS Foundation; Anthony Puzzo, ESRI</p>
12:00–1:30 p.m.	<p><b>Lunch (3150 &amp; 4150) and Exhibit Hall Networking</b></p>
1:30–2:00 p.m.	<p><b>Exhibitor Showcase</b></p>
2:00–3:00 p.m.	<p><b>Maryland's Centralized Resource to Better NG911 Data Management</b></p> <p>NG911 concerns and issues facing the 24 PSAPs in the state, including boundary issues, standard discussion, projection concerns, and statewide NG911 goal achievement.</p> <p><b>Presenters:</b> Patrick McLoughlin, Maryland Department of Information Technology; Peter Hanna, JMT Technology Group</p>
3:00–3:30 p.m.	<p><b>Afternoon Break (West Gallery-4th Floor)</b></p>
3:30–4:30 p.m.	<p><b>Table Top Exercise: How GIS can be used in an Emergency</b></p> <p>End the day with a table top exercise demonstrating how GIS can aid public safety agencies during and after a response. Maps and apps will be created to support better decision making during the response and recovery phases. The presentation will show how easy and quickly this can be achieved when you engage your GIS professional early in the event.</p> <p><b>Presenters:</b> Joanie Appell, Anne Arundel County Fire Department; Shelby Zelonis, Montgomery County Police Department; Anne-Sarra Blevins, Anne Arundel County Police Department; Will Melville, Maryland Emergency Management Agency; Tim Hutchison, Government of the District of Columbia; Rebecca Harned, National Alliance for Public Safety GIS Foundation; Anthony Puzzo, ESRI</p>
4:30–6:30 p.m.	<p><b>TUgis Social: Network with GIS professionals from across the region (Central Gallery-4th Floor)</b></p>

# Wednesday Morning, August 8

7:30AM **Arrival and Breakfast (Rooms 2216 & 2302)**

8:30AM **Opening Plenary—The State of the Geospatial Industry**  
**Moderator: Michael Scott, Ph.D.**, Interim Dean, Salisbury University  
**Patrick Callahan**, GIS Manager, Prince George’s County Office of Information Technology  
**Julia Fischer, GISP**, Acting Chief of Applications and Geographic Information Officer, Maryland Department of Information Technology  
**Martin Roberge, Ph.D.**, Department of Geography & Environmental Planning, Towson University

9:30AM **Exhibit Hall Coffee Break (Room 4211)**

	Reading Room (4th Floor)	2110 Overflow: 2114	2310 Overflow: 2303	3110 Overflow: 3114	3118	3310 Overflow: 3303	3317	4110 Overflow: 4105	4310 Overflow: 4317	4315	4329	4331
10:00AM	<b>ArcGIS Platform Overview and Updates</b> Alexander Brown and Keith Swavely, Esri	<b>Autonomous/Connected/Electric/Smart: What GIS Practitioners can do to Prepare for these Technologies</b> Martha Morecock Eddy, KCI Technologies	<b>Maryland Roads: The What and Where of our Water</b> Kiona Leah, Maryland Department of Transportation State Highway Administration	<b>USAID GeoCenter: A Geographic Approach to International Development</b> Michael Crino, USAID’s GeoCenter		<b>Land Surveying’s Haphazard GIS Journey</b> James Shaw, GPI Geospatial, Inc		<b>Paper and Web Maps: A Crawl, Walk and Run Approach to Public Safety GIS</b> Joanie Appell, Anne Arundel County Fire Department; Anne-Sarra Blevins, Anne Arundel County Police Department; Tim Hutchison, Government of the District of Columbia; Will Melville, Maryland Emergency Management Agency; Shelby Zelonis, Montgomery County Police Department	<b>Aerial Opportunities: A look into the current and future use cases of Unmanned Aircraft Systems (UAS)</b> Justin Towles, Founding Partner, Ascension Global	<b>Speaker Ready (Room 4314)</b>  <b>Video Room (Room 4204)</b>		
11:00AM	<b>ArcGIS Solutions</b> Keith Swavely and Matthew Viverito, Esri	<b>Prince George’s County Living Shoreline Site Assessment GIS Tool</b> Anthony Dowell and Stephen Sporik, AECOM	<b>The Role of GIS in Reporting Municipal Stormwater Permits</b> William Doane and Nathaniel Krause, Baltimore City Department of Public Works (DPW)	<b>GIS for the Fire Service</b> Tewodros Hailegebere, Prince George’s County	<b>Multi-Modal Network Analyst: Enhancing Accessibility and Mobility Analyses with General Transit Feed Specification (GTFS)</b> <b>(Room 3118)</b> Sandy Davis and Oren Hirsch, Foursquare Integrated Transportation Planning, Inc. (Foursquare ITP)	<b>GIS, Open Data, and Beyond—How MD iMAP is Extending the Reach of the GIS Platform</b> Jessie Cahoon, Maryland Environmental Services; Patrick McLoughlin, GISP, Maryland Department of Information Technology	<b>Developing a Regional Bicycle Map</b> Mara Kaminowitz, Baltimore Metropolitan Council	<b>Private Sector Support of Public Safety (NAPSG / ESRI)</b> Rebecca Harned, National Alliance for Public Safety GIS Foundation; Anthony Puzzo, ESRI	<b>Quantifying Stream and Floodplain Roughness Using a Drone-based Lidar and Continuous Flow Monitoring</b> Jonathan Resop, Ph.D., University of Maryland; W. Cully Hession, Virginia Tech			
11:30AM		<b>Integrating GIS With a Reverse 911 System to Automate Utility Customer Notification</b> Joe DeLuca, EBA Engineering; Steve Fabijanski, Whitney Bailey Cox & Magnani, LLC	<b>Enhancing MDE NPDES–MS4 Geodatabase for Efficient and Accurate Reporting</b> Charles Walsh, Prime AE Group, Inc.			<b>Maryland’s High Resolution Aerial Photography Program</b> Lisa Lowe, Maryland Department of Information Technology	<b>Prioritizing Bicycle Master Plan Recommendations Using GIS</b> Russell Provost, Montgomery County Planning		<b>Integrating UAV’s into Maryland Department of Transportation</b> Ross Cutts, Maryland Department of Transportation	<b>Caroline County DataMark Address Assessment and Action Plan</b> Chris Kephart, Caroline County; Jonathan Soulen, Michael Baker International	<b>Reactive vs. Data Driven Traffic Safety Analysis</b> Sean Lynn, Washington College	<b>Sea Level Change, Flood Estimates, and Historic Structures: Identifying Risk and Vulnerability in Four Talbot County Villages</b> Mary Buffington and Brett Dobelstein, ESRGC; Ashley Samonisky, Vision Planning & Consulting

12:00PM **Lunch (Rooms 3150 & 4150) and Exhibit Hall Networking**  
 12:00PM–1:00PM **MSGIC Elevation Working Group, Moderators: Roger Barlow and Erin Silva (Room 3216)**  
 12:00PM–1:00PM **QGIS Lunch Meeting, Moderator: Shawn Pickett (Room 3214)**  
 12:00PM–1:30PM **Command Vehicle (CLA Bus Stop, University Ave)**

- LIGHTNING SESSIONS
- WORKING WITH DATA
- INNOVATION
- WORKFLOW
- INDUSTRY TALKS
- INFRASTRUCTURE
- GOVERNMENT
- WATER AND TRANSPORTATION
- DEVELOPMENT
- TECHNOLOGY
- OUR COMMUNITIES
- PUBLIC SAFETY
- PUBLIC HEALTH

# Wednesday Afternoon, August 8

	Reading Room (4th Floor)	2110 Overflow: 2114	2310 Overflow: 2303	3110	3114	3310 Overflow: 3303	3317	4110 Overflow: 4105	4310 Overflow: 4317	4315	4329	4331
1:30PM		<b>Write Custom Apps, Not Custom Code.</b> Michael Funaro, Latitude Geographics	<b>KCI Geospatial Solutions "Client Centric, Forward Thinking, Industry Leaders"</b> Brendan Carroll, Dustin Henry, Brad Spittel and Jeff Tirschman, KCI Technologies		<b>JMT Technology Group: Better Customer Collaboration Through Storytelling</b> Vince Novak, JMT Technology Group	<b>DataMark GIS for NG9-1-1. The GIS address maintenance and workflow solution for localities.</b> Kenny Miller and Jonathan Soulen, Michael Baker International			<b>The MPSGIS Program at the University of Maryland</b> Jonathan Resop, University of Maryland			
2:00PM	<b>Mobile Data Collection - ArcGIS Apps</b> Anthony Puzzo and Matthew Viverito, Esri	<b>Open and Agile Software Development with the Government: Small Business Administration HUBZone Map Modernization</b> Jonathan Dandois, Fearless Solutions, LLC	<b>SHA Pre-Inlet Cleaning Inspections</b> Thomas Ebeling and Brent Reeves, KCI Technologies	<b>LIGHTNING SESSIONS</b> See full session details below	<b>Using a Geographic Information System as a Public Health Tool to Uncover Inequities Hidden in Aggregated Data</b> Sandy Hoar, George Washington University	<b>Maryland Composite Locator—Building a Geocoding Service for the State, One Locator at a time</b> Jeyan Jebaraj, GIO Office, Maryland Department of Information Technology	<b>Leveraging Spatial Data to Manage and Measure MTA Bus Headways</b> Jade Clayton, RK&K; Leah Visakowitz, McCormick Taylor	<b>Maryland's Centralized Resource to Better NG911 Data Management</b> Patrick McLoughlin, Maryland Department of Information Technology; Peter Hanna, JMT Technology Group	<b>Utilizing Augmented Reality for a Resilient Future</b> Kenneth Bishop, Sean Lavallep and Michael Manen, Maryland Environmental Service	<b>Data Lifecycle for Interior Space Management at BWI Thurgood Marshall Airport</b> William Garmer, JMT Technology Group	<b>Putting Predictive Analytics on the Map</b> Mehdi Khan, Anne Arundel County	<b>Replacing Static Publications with Story Maps</b> Christina Gladmon and CarolAnn Williams, Center for Mapping and Analysis at Community College of Baltimore County (CCBC)
2:30PM	<b>The Maryland Department of Agriculture's Cover Crop Program: Using GIS to Improve Efficiency, Accuracy, and Data Value</b> David Sides, Towson University Center for GIS	<b>MDOT MDTA's Expanded Use of GIS for Asset Management &amp; NPDES Permit Compliance</b> Marian Batton, JMT Technology Group; Armand de Rosset, Maryland Department of Transportation MDTA		<b>What Wikipedia Can't Tell You About Life Expectancy</b> Darcy Phelan-Emrick, Baltimore City Health Department	<b>Maryland Parcel Data: Maintenance and Distribution</b> Gary Maragos, Maryland Department of Planning	<b>Toward ZERO, Taking Baltimore towards Zero Pedestrian Fatalities (A Story Map)</b> Bineeta Sihota, Ph.D., and Mikah Zaslow, Baltimore City Department of Transportation	<b>Integrating Voice-Enabled Artificial Intelligence with Geospatial Data for a New "311" Service Paradigm</b> Apollo Teng, Montgomery County		<b>Integration of MDOT MAA's Document Management System and GIS via the Projects Locator Application</b> Mark Butterfield and Koren Melfi; JMT Technology Group	<b>Working Seamlessly with the R-ArcGIS Bridge</b> Jonathan Gross, Baltimore City Health Department	<b>Mapping Baltimore's Urban Forest</b> Nathan Randolph, City of Baltimore	
3:00PM	<b>Afternoon Break (West Gallery 4th Floor)</b>						<b>Afternoon Break (West Gallery 4th Floor)</b>					

- CODING
- OUR COMMUNITIES
- COMPLETE STREETS AND IMPROVING OUR COMMUNITIES
- TECHNOLOGY
- DEVELOPMENT
- WATER AND TRANSPORTATION INFRASTRUCTURE
- GOVERNMENT
- INDUSTRY TALKS
- INNOVATION
- LIGHTNING SESSIONS
- WORKING WITH DATA
- WORKFLOW
- PUBLIC HEALTH
- PUBLIC SAFETY

## CONNECT WITH EMERGING PROFESSIONALS

It's not always easy starting out.

Look for the emerging professional sticker on name badges. Chat with them during the break, sit with them at lunch, or share your business card so they can reach out after the conference.



### LIGHTNING SESSIONS 2:00–3:00PM (Room 3110)

**A GIS Capstone Project for Secondary Students**  
Daniel Whalen, Prince George's County Public Schools

**Data Classification for Traffic Crashes**  
Daniel Knopp, University of Maryland

**Empirical Estimation of Total Phosphorus Concentration at Buriganga River Using Landsat 5 Imagery**  
Istiak Bhuyan and Nashid Kamal Khadem, Morgan State University; Md. Muhib Kabir, Knowledge Management Consultants Ltd.

**Location-Based Analysis for the Recruitment of U.S. Border Patrol Agents**  
Jordan Douthitt, Penn State University

**Using GIS to Determine High Fire Risk Areas in Prince George's County**  
Charles Wrenn, Bourntec Solutions and Prince George's County

# SAVE THE DATE

# TUgis

## Maryland's Geospatial Conference

### August 8, 2019 | Towson, MD


# Wednesday Afternoon, August 8

	Reading Room (4th Floor)	2110 Overflow: 2114	2310 Overflow: 2303	3110	3310 Overflow: 3303	3317	4110 Overflow: 4105	4310 Overflow: 4317	4315	4329	4331
3:30PM	<b>Analytics, Dashboards and Insights</b> Anthony Puzzo and David Thom, Esri	<b>An IoT Approach to Improved Water Quality via Intelligent Stormwater Management</b> Eric Czajkowski and Jason Wheatley, Century Engineering, Inc.	<b>Traffic Barrier Program Management</b> Maurice Carter, John Privot and Matt Troxler, Wallace Montgomery and Associates	<b>LIGHTNING SESSIONS</b> See full session details below	<b>Automation Increases Planning, Civic Engagement, and Transparency</b> Jason Samus, EA Engineering, Science and Technology; Michael Shean, Prince George's County	<b>Combating the Substance Abuse Crisis: The Substance Use Disorder Bed Finder Program</b> Mary Kate Hudson, Shawn Wampler and Kevin Simmons, City of Annapolis Office of Emergency Management	<b>Table Top Exercise: How GIS can be used in an Emergency</b> Joanie Appell, Anne Arundel County Fire Department; Anne-Sarra Blevins, Anne Arundel County Police Department; Rebecca Harned, National Alliance for Public Safety GIS (NAPSG) Foundation; Tim Hutchison, Government of the District of Columbia; Will Melville, Maryland Emergency Management Agency; Anthony Puzzo, ESRI; Shelby Zelonis, Montgomery County Police Department	<b>Designing a GIS Environment to Support Real-Time Emergency Management</b> Andrew Smart and Brian Wells, EBA Engineering	<b>Moving from the Digital to the Practical</b> Taryn Davidson and George Houck, Kent County Levy Court	<b>A Mobile LiDAR Solution for Extended Underground Tunnel Mapping at the Washington Metropolitan Area Transit Authority (Washington DC)</b> Donald Falken, WMATA	<b>Building Community Indicators for Improving Baltimore's Neighborhoods</b> Cheryl Knott, Baltimore Neighborhood Indicators Alliance
4:00PM		<b>Using Python Toolboxes for Custom ArcGIS Tools and Geoprocessing Services</b> Michael Mattaini, EBA Engineering, Inc.	<b>Streamlining MDOT SHA's Annual Truck Parking Surveys with ArcMap, ArcGIS Pro, and Collector for ArcGIS</b> Mallory Gill, Sean Lain and Charles Siwinski, JMT Technology Group		<b>The GIS Revolution Effect on Government Agencies</b> Linda Loubert, Morgan State University	<b>GEOLOOM co&gt;map: Mapping Arts and Culture with Communities</b> Christine Hwang and Cheryl Knott, Baltimore Neighborhood Indicators Alliance		<b>Leveraging GIS and Business Intelligence to Address Public Works Emergencies</b> Prajwol Bhattarai, Baltimore City Department of Public Works; Alan Foster and Tracy Williams, KCI Technologies	<b>Tackling Data Conflation and Inherited Workflows</b> Jeyan Jebaraj and Conrad Schaefer, Maryland Department of Information Technology	<b>Collecting Sub-meter GNSS Data in Arc Collector</b> Kierran Sutherland, Nick Thompson and Brian Walsh, Wallace Montgomery and Associates	<b>Open Source for Open Space Preservation in Baltimore County</b> Thayer Young, Cicada Systems GIS Consulting
4:30PM	<b>TUgis Social (Central Gallery 4th Floor)</b> Map App Competition Winners Announced					<b>TUgis Social (Central Gallery 4th Floor)</b> Map App Competition Winners Announced					

- LIGHTNING SESSIONS
- WORKING WITH DATA
- WORKFLOW
- INNOVATION
- INDUSTRY TALKS
- GOVERNMENT
- WATER AND TRANSPORTATION INFRASTRUCTURE
- DEVELOPMENT
- TECHNOLOGY
- PUBLIC SAFETY
- PUBLIC HEALTH
- OUR COMMUNITIES
- COMPLETE STREETS AND IMPROVING OUR COMMUNITIES

## Looking to acquire aerial data?





For more information:  
**Contact Ryan Burley**  
 VP, Business Development  
 rburley@surdex.com  
 tel 206.915.3294

**WWW.SURDEX.COM**

**LIGHTNING SESSIONS**  
**3:30–4:30PM (Room 3110)**

**Creating a Custom Web Application to Assist Towson University's Police Department with Clery Act Compliance**  
 Phillip Reese, Towson University Center for GIS

**Customize your apps, not your code!**  
 Michael Funaro, Latitude Geographics

**Maryland's Capital Budget – Providing Geospatial Context**  
 Samuel Hayek, Spatial Systems Inc.; Patrick McLoughlin, Maryland Department of Information Technology

**One-Maryland-One-Network (OMOC) Project Status**  
 Jesse Day and John Hudler, Transcend Spatial Solutions

**Survey123 Integration with Spike**  
 Tim Triplett, Duncan Parnell

**What about Pro?**  
 Jennifer Lishman Nunn, JMT Technology Group

## Leaders are made here.

We keep on the forefront by educating the surveying and geospatial community in the latest technological development, such as total stations, 3D laser scanners, satellite positioning systems, drones, to name a few!





Learn more about us online at [www.marylandsurveyor.org](http://www.marylandsurveyor.org) and consider attending our upcoming Fall Conference on October 17 -20 in College Park, MD.



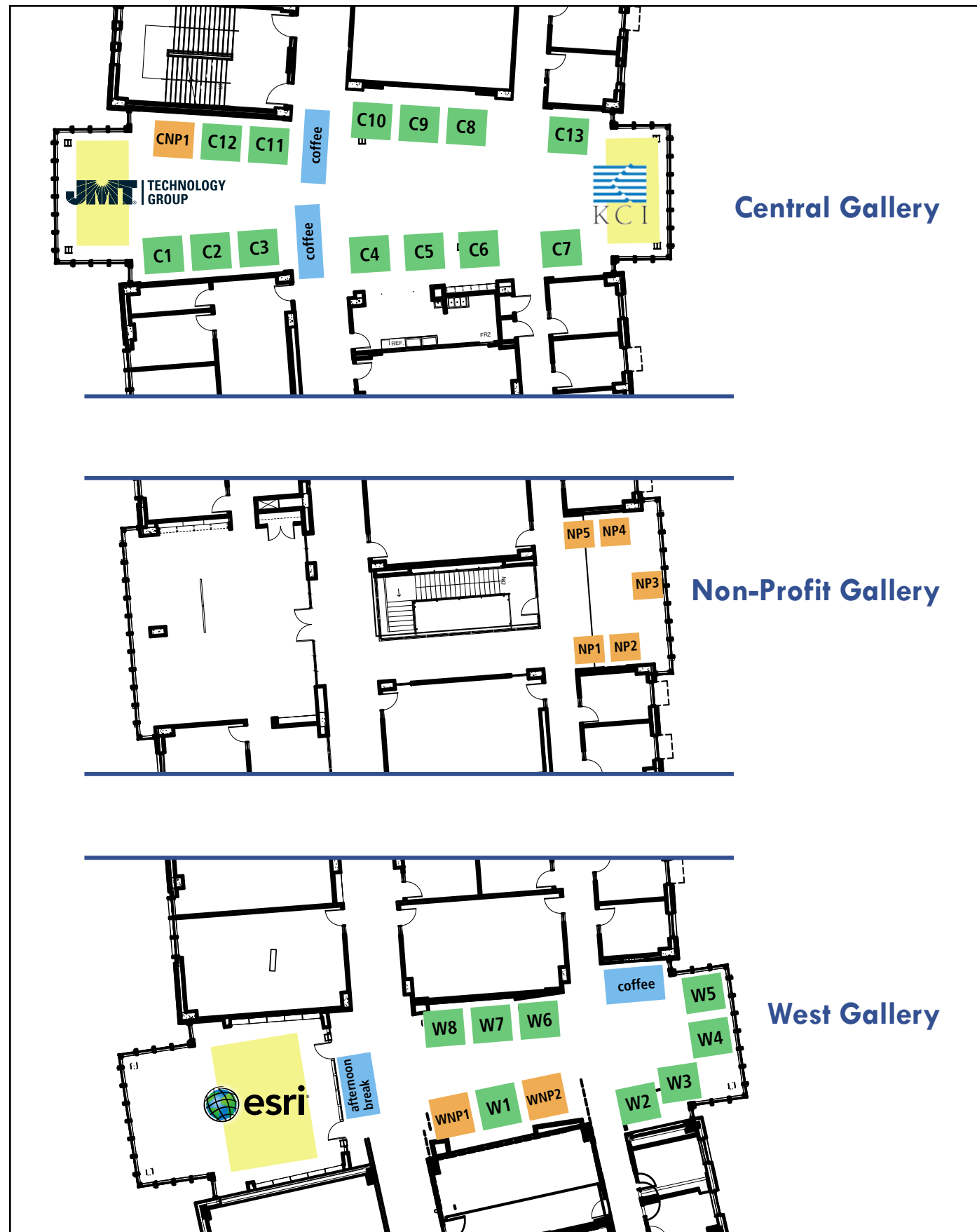


**Serving The Entire Enterprise!**  
**Maryland CATS+ Contractor**

**NLTGIS.com**  
**1.800.206.5994**



# 4th Floor Exhibit Hall Map



# Exhibitors

## Anchor Exhibitors



## Corporate Exhibitors

- C1** Duncan Parnell
- C2** EA Engineering, Science, Technology, Inc.
- C3** Michael Baker International
- C4** AECOM
- C5** Caron / East, Inc.
- C6** Whitney Bailey Cox & Magnani
- C7** Keystone Precision Instruments
- C8** McCormick Taylor
- C9** Spatial Systems Associates
- C10** Maryland Society of Surveyors
- C11** ECO Integration
- C12** Infogroup
- C13** Century Engineering
- W1** CycloMedia
- W2** EagleView
- W3** RPG Squarefoot Solutions
- W4** RK&K
- W5** Wallace Montgomery and Associates
- W6** Latitude Geographics Group
- W7** Fugro
- W8** AXIS

## Non-Profit Exhibitors

- CNP1** Towson University Center for GIS (CGIS)
- WNP1** Maryland Environmental Service
- WNP2** Eastern Shore Regional GIS Cooperative (ESRGC)
- NP1** Community College of Baltimore County (CCBC)
- NP2** Washington College
- NP3** Maryland State Geographic Information Committee (MSGIC)
- NP4** U.S. Census Bureau
- NP5** UMD Department of Geographical Sciences

ISO 9001:2015 Certified | Employee-owned Since 1988



# GEOSPATIAL SOLUTIONS

TEAM POWERED. SOLUTIONS ORIENTED.  
WE MAKE THE **IMPOSSIBLE POSSIBLE.**

[www.kci.com](http://www.kci.com)

PROGRAM MANAGEMENT RISK MANAGEMENT LIFE-CYCLE COST ASSET MANAGEMENT  
COMPLIANCE **INNOVATIVE** MOBILE **ASSET MANAGEMENT** WIREFRAMING  
DISCONNECTED EDITING INFORMATION MANAGEMENT DASHBOARDS DATABASE MANAGEMENT  
BUSINESS ANALYSIS 3-D LIDAR **COMMUNICATIONS INFRASTRUCTURE** CLIENT CENTRIC  
**SCALABLE SOLUTIONS** ENTERPRISE CRITICALITY MODELING STORMWATER COMPILATION MOBILE  
DATA ANALYSIS FIELD DATA MANAGEMENT ENTERPRISE GIS DEVELOPMENT RESPONSIVE SOLUTIONS  
**ENVIRONMENTAL DESIGN** FIELD SERVICES REQUIREMENTS **UTILITIES** DASHBOARDS  
DASHBOARDS PREDICTABLE MODELING MS4 **WATER LEADER** COMPLIANCE  
DESIGN **LEADER** INSPECTION COTS **INNOVATIVE** WIREFRAMING  
HTML **LEADER** CMMS COTS



**MEET KCI  
GEOSPATIAL  
SOLUTIONS**

## Center for GIS



### Empowering Maryland's Geospatial Community for over 25 years.

Stop by our booth to learn more about how  
our experts can geospatially empower you!



[towson.edu/CGIS](http://towson.edu/CGIS)

[CGIS@towson.edu](mailto:CGIS@towson.edu)

[facebook.com/TUcgis](https://facebook.com/TUcgis)

## Geography & Environmental Planning

Essential to business, government, science, and education

### MAJORS:

- Geography & Environmental Planning
- Geography & Land Surveying
- Accelerated B.S./M.A.

### COMBINED MAJORS:

- Geography and Economics
- Geography and History
- Geography and Political Science
- Geography and Sociology-Anthropology

### MINORS:

- Geography
- Geographic Information Sciences
- Climate, Weather & Society
- Minor/M.A. in Geography

### GRADUATE:

- M.A. in Geography

[towson.edu/Geography](http://towson.edu/Geography)

410-704-2973

[geography@towson.edu](mailto:geography@towson.edu)

[facebook.com/TUGeography](https://facebook.com/TUGeography)





**Maryland State Geographic  
Information Committee**

MSGIC was formed in 1992 to help better serve the GIS community in Maryland. MSGIC members represent all levels of government, academia, regional organizations, and private industry. Through our volunteer organization, our goal is to help make GIS in Maryland better.

## **MEMBER BENEFITS**

---

- ▶ GIS Advocacy / Voice in Maryland GIS
- ▶ Professional Networking Events
- ▶ Directory of Geospatial Professionals in MD
- ▶ Strategic Partnerships With Other Organizations
- ▶ Technical Training Opportunities
- ▶ Website 'Members Only' Areas
- ▶ MSGIC Presence at Conferences / Exhibits
- ▶ Student Scholarships
- ▶ Internships

## **GET INVOLVED**

---

### **Attend a Regional Quarterly Meeting**


#### **Our Caucuses**

- ▶ State Government
- ▶ Local Government (County/Municipal)
- ▶ Regional Council
- ▶ Private Sector (including Non-Profits)
- ▶ Federal Government
- ▶ Education

#### **Our Subcommittees**

- ▶ Data and Resources
- ▶ Education
- ▶ Grant Development
- ▶ Outreach

## **STAY INFORMED WITH EVERYTHING GEOSPATIAL IN MARYLAND!**

 Visit / Join at [MSGIC.org](http://MSGIC.org)

 Read our Blog [MSGIC.org/wordpress/blog/](http://MSGIC.org/wordpress/blog/)

 Join the conversation on LinkedIn (MSGIC)

 Follow us on Twitter @MSGIC\_MD